

31 January 2023

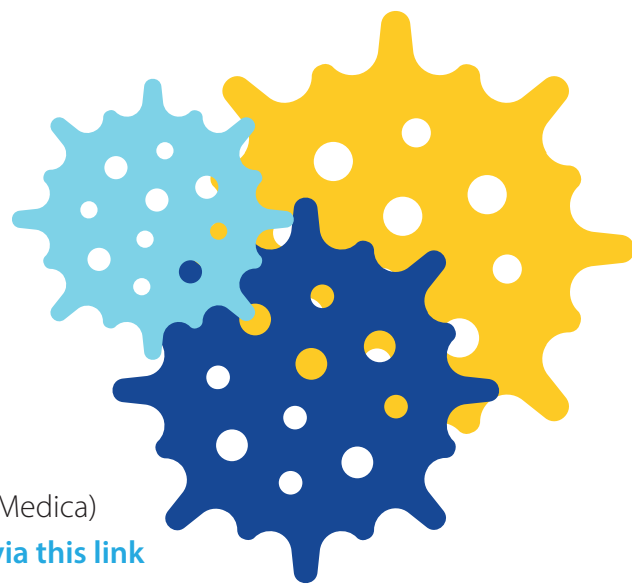
Karolinska Institutet (Biomedicum), Stockholm

# EU Beating Cancer Plan and the EU Cancer Mission

– collaboration for effective and equitable implementation across Europe

**Cancer remains a major scourge on European Society. In 2020, 2.7 million people in the European Union were diagnosed with the condition, and 1.3 million people lost their lives to it.**

In February 2021, the European Commission launched Europe's Beating Cancer Plan. Together with the EU Mission Cancer, it represents a concerted effort across Europe to reduce cancer incidence and mortality and improve the quality of life of its citizens. Since its launch, several milestones have been achieved, most recently the adoption of revised EU Council recommendations on cancer screening. Even considering that health is a competence of Member States, the European cancer plan presents the opportunity to work in a coordinated and synergetic way to tackle the burden of the condition, by offering a framework to support Member States in their own national cancer control plan implementation. It can also help create sufficient critical mass across the EU to create synergies, enable the sharing of best practices and foster greater equity of access to high quality prevention and care across the EU.



## Registration

**Date:** 31 January 2023

**Conference:** 13:00–17:30

**Networking reception:** 17.30–19:00

**Venue:** Karolinska Institutet, Stockholm

(Conference in Biomedicum, Networking reception in Aula Medica)

[Register for the conference and networking reception via this link](#)

Organizers:





# Agenda

## Implementing EU Beating Cancer Plan and the EU Cancer Mission

Plenary: From research and innovation to patient benefit

Moderator: **Göran Hägglund**, Chairman Swedish Cancer Society

13:00	<b>Welcome</b>	<p><b>Jenni Nordborg</b>, Director International Relations at Lif, The Research-based Pharmaceutical Industry</p> <p><b>Ebba Hallersjö Hult</b>, Co-founder and Head of Vision Zero Cancer &amp; Testbed Sweden Precision Health Cancer</p>
13:10	<b>Moderator's introduction</b>	<b>Göran Hägglund</b> , Chairman Swedish Cancer Society
13:15	<b>Collaborating and committing to innovation, equity and excellence in cancer care across Europe</b>	<p><b>John F. Ryan</b>, Deputy General Director, DG Health and Food Security, European Commission</p> <p><b>Petra Rinman</b>, Head of Unit, National Board of Health and Welfare, Sweden</p>
13:35	<b>Keynote address: Cancer Plan, Cancer Mission, Vision Zero – why they matter for citizens and patients</b>	<b>Bettina Ryll</b> , Strategist Mission-oriented Innovation in Health at Vision Zero Cancer, Founder Melanoma Patient Network Europe, member of the first EU cancer mission board
13:50	<b>Groundshot: a pan-European, patient-centered, and data-driven approach to tackling cancer (A Lancet Oncology Commission)</b>	<p><b>Mark Lawler</b>, Associate pro-vice chancellor, professor of digital health and chair in translational cancer genomics, Queen's University Belfast, co-chair European Cancer Organization's (E.C.O) Special Focused Network on Covid-19</p> <p><b>Peter Naredi</b>, Professor and Senior Consultant Sahlgrenska Academy and Sahlgrenska University Hospital, Member Board of Directors Sahlgrenska Comprehensive Cancer Center</p>
14:10	<b>Bridging education, research and clinical care – the important role of Comprehensive Cancer Centres in driving the European cancer research agenda and its translation into patient benefits</b>	<b>Patrik Rossi</b> , Director of Theme Cancer at Karolinska University Hospital, Chair Board of Directors Karolinska Comprehensive Cancer Centre
14:20	<b>Pushing the boundaries – innovation in cancer care</b>	<b>Thomas Allvin</b> , Executive Director for Strategy and Healthcare Systems at European Federation of Pharmaceutical Industries and Associations (EFPIA)
14:30	<b>Panel discussion</b>	<b>Moderator and John F Ryan, Petra Rinman, Mark Lawler, Patrik Rossi</b>
14:55	<b>Concluding reflections and perspective</b>	<b>Mike Morrissey</b> , CEO, European Cancer Organisation
15:00–15:25	<b>Coffee break</b>	





# Agenda

## Break-out session 1: New Recommendations for Screening

**Case: Lung cancer**

**Moderator: Suzanne Wait**, PhD, Co-founder and Managing Director of The Health Policy Partnership, Visiting Lecturer at the University College London Global Business School for Health

15:30	<b>Introduction by the moderator</b>	<b>Suzanne Wait</b> , The Health Policy Partnership
15:35	<b>The new EU Cancer Screening Scheme</b>	<b>John F. Ryan</b> , Deputy Director General, DG Health and Food Security, European Commission
15:50	<b>The patient's perspectives</b>	<b>Penilla Gunther</b> , Member of the Cancer Mission Board & Founder and Program Director of FOKUS Patient®
16:00	<b>Lung cancer screening – time for implementation</b>	<b>John K Field</b> , Professor, Director of Research, Roy Castle Lung Cancer Research Programme, The University of Liverpool, Department of Molecular and Clinical Cancer Medicine, Institute of Systems, Molecular & Integrative Biology, Lung Cancer Policy Network
16:15	<b>The value of lung cancer screening: a missed opportunity?</b>	<b>Thomas Hofmarcher</b> , Research Director, Swedish Institute for Health Economics (IHE)
16:30	<b>Country case: Lung cancer screening in Poland</b>	<b>Jacek Jassem</b> , Professor of Clinical Oncology and Radiotherapy at Medical University of Gdańsk. Preseident, Polish Cancer League <b>Witold Rzyman</b> , Professor, President of the Faculty and Clinic of Chest, Medical University of Gdańsk
16:50	<b>Prepare for screening!</b>	<b>Ulrika Årehed Kågström</b> , Secretary General Swedish Cancer Society, President-elect Union International for Cancer Control (UICC)
17:00	<b>Panel discussion</b>	<b>Speakers participating in the session</b>
17:25– 17:30	<b>Closing remark</b>	<b>Ebba Hallersjö Hult</b> , Co-founder and Head of Vision Zero Cancer & Testbed Sweden Precision Health Cancer





# Agenda

## Break-out session 2: Precision Diagnostics & Treatment

– How to integrate diagnostics and data to inform therapeutic intervention and outcome measures

**Moderator: Richard Rosenquist Brandell**, Professor, Senior Consultant at KI and Karolinska University Hospital, Chair of Genomic Medicine Sweden, Co-founder Testbed Sweden Precision Health Cancer

15:30	<b>Precision Oncology: the future is here</b>	<b>Ivana Cattaneo</b> , Chair of the EFPIA Oncology Platform
15:40	<b>Precision Oncology: Specific needs for children and adolescents with cancer</b>	<b>Gilles Vassal</b> , Head of the Pediatric Research programme at Gustave Roussy Comprehensive Cancer Center, EU academic Consortium for Innovative Therapies for Children with Cancer (ITCC)
15:55	<b>Implementing precision medicine in routine cancer care. Support systems to guide clinical decision-making in precision oncology</b>	<b>Richard Rosenquist Brandell</b> , Professor of Clinical Genetics at Karolinska Institutet and Senior Consultant at Karolinska University Hospital, Chair of Genomic Medicine Sweden, Member of the Nobel Assembly at Karolinska Institutet.  <b>Janne Lehtiö</b> , Professor in medical proteomics at Karolinska Institutet, Scientific Director at SciLifeLab, Member Board of Directors Karolinska Comprehensive Cancer Centre
16:15	<b>Impact of quality standards on improving cancer care and research</b>	<b>Simon Oberst</b> , Director of Quality and Accreditation, Organisation of European Cancer Institutes (OEI), Co-Chair Quality Cancer Care Network, European Cancer Organisation (ECO)
16:30	<b>The European Health Data Space and Cancer: Applying lessons learnt for successful implementation of precision medicine in routine cancer care</b>	<b>Mark Lawler</b> , Associate pro-vice chancellor, professor of digital health and chair in translational cancer genomics, Queen's University Belfast
16:45	<b>Panel discussion</b>	<b>Speakers participating in the session and Margareta Haag</b> , Chair, Network Against Cancer
17:25–17:30	<b>Closing remark</b>	<b>Jenni Nordborg</b> , Director International Relations at Lif, The Research-based Pharmaceutical Industry

17:30 Networking reception

